



WELLINGTON COLLEGE
INTERNATIONAL
SHANGHAI

Be **You** Be **More**

Prospectus

Applying to Wellington

2023-24



Contents

Welcome	5
Overview	6
Vision	8
Wellington Values	9
A Guide to Year Groups	10
Early Years	12
Pre-Nursery Example Timetable	13
Nursery Example Timetable	14
Reception Example Timetable	15
Primary School	16
Primary Learner Profile	17
Years 1 and 2 Example Timetable	18
Year 3 Example Timetable	19
Years 4 and 5 Example Timetable	20
Year 6 Example Timetable	21
Secondary School	22
Year 7 Example Timetable	24
Year 8 Example Timetable	25
Year 9 Example Timetable	26
Years 10 and 11 Example Timetable	27
Years 12 and 13 Example Timetable	28
Higher Education and Careers Guidance	30
Dual Language Pathway	31
Chinese	32
Enrichment	34
The Arts (Drama, Dance, Music, Other Arts)	34
Sport	34
Co-Curricular Activities	35
Sample CCA & Enrichment selection	35



Pastoral Care and Houses 36

Parents as Partners 38

Parent Engagement Programme 22

Friends of Wellington 22

Fellowships and Scholaships 40

The Wellington Academic, Sports and Arts Fellowship Programme 40

The Wellington Scholarship Award 40

Application Guidelines 42

Timing 42

English Language 42

Siblings and Waiting Lists 42

Application Costs 42

Special Educational Needs (SEN) 42

Bursaries 42

Terms and Conditions 42

Transferring Schools 42

Application Checklist 43

How to Apply 44

Checklist 45

Assessments 46

Assessment Process 46

Early Years Assessment Process (Pre-Nursery, Nursery, Reception) 46

Primary School Assessment Process (Years 1-6) 46

Secondary School Assessment Process (Years 7-12) 47

Overseas applicants' Assessment Process 47

Safeguarding and Child Protection 48

Facilities 49



Many schools talk about providing a world-class education, but very few can lay claim to this like Wellington College International Shanghai can. Situated centrally in Shanghai, the College is part of the Wellington College China group, which is an international partner of the prestigious Wellington College in England. We are a truly modern campus in one of the most vibrant cities in the world, but we are steeped in the rich tradition of independent British education.

As such, our pupils are highly successful, with IGCSE and IB results that are amongst the best in the world. However, what truly sets the College apart is our focus on doing the very best for each and every pupil. We believe that all children should have the opportunity to experience success in a way that is meaningful to them. Whilst always ensuring that our pupils have access to the world's top universities by the end of their schooling with us, we also want them to find their sense of belonging and purpose in life. A passionate piece of artwork, a thought-provoking performance or a personal breakthrough on the sports field are all encouraged, nurtured and celebrated as warmly as a top academic grade.

Using the Wellington values as our yardstick, we encourage every Wellington Shanghai pupil to grow and develop as thoughtful and empathetic leaders of the future, with courage, integrity, kindness, respect and responsibility at the heart of all that they do. With families from over 40 different countries and territories as part of our growing global Wellington Shanghai Community, we take pride in the knowledge that our leavers will move on to spread these values across the world, each of them playing their role, no matter how big or small, in creating a better future for all.

We understand that choosing the right school for your child is one of the most important decisions that you make as a family. Our Admissions Team is available to provide you with all the information you need about Wellington College enabling your family to make a fully informed choice. We hope that this guide will give you a rich insight into the benefits of being a part of the Wellington Shanghai Family, and we do hope that you can visit us to experience our incredible staff, pupils and campus in person.

Brendon Fulton

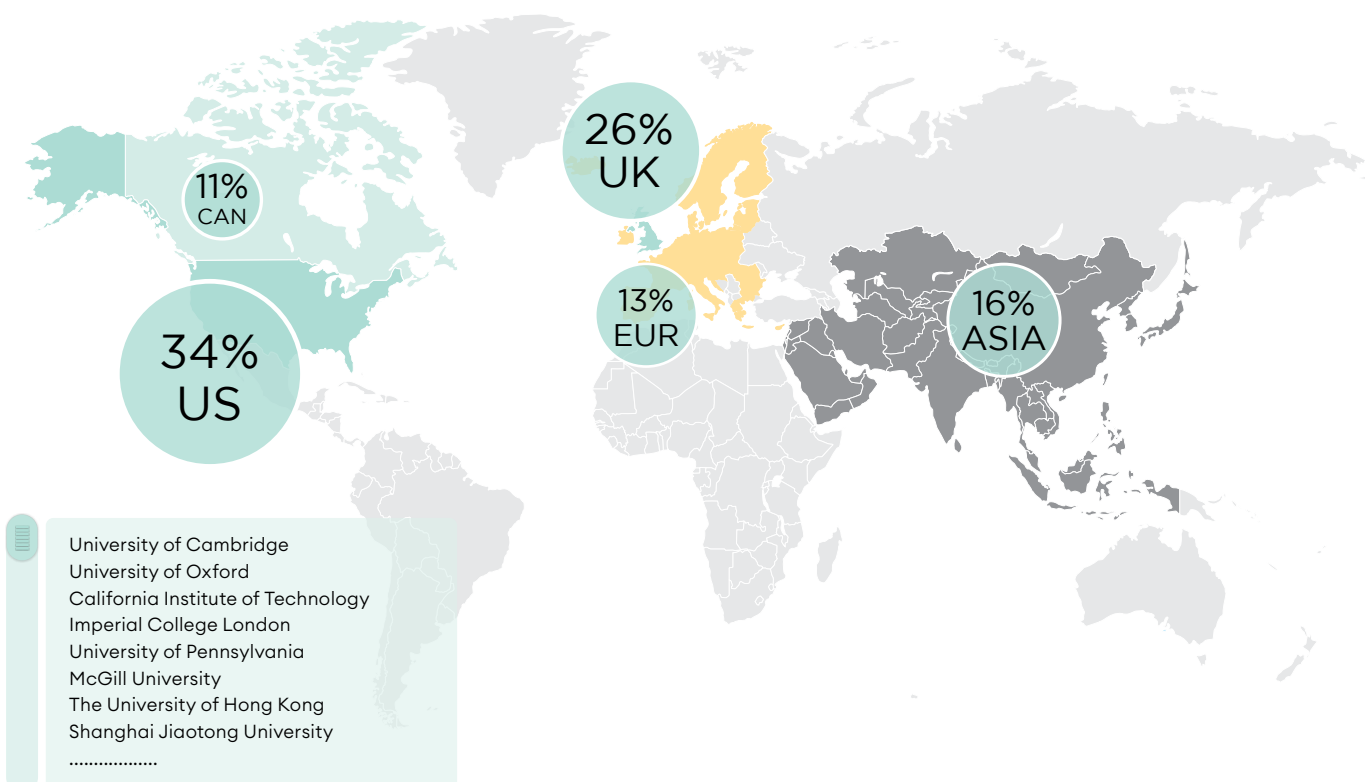
Master

Overview

Wellington College International Shanghai is a co-educational day school located in the Qiantan district in Pudong, at the heart of the Lujiazui New Bund development area and is easily accessible from both Pudong and Puxi.



University Destinations 2023



School Population

Nationalities represented	45	Class of 2023	40	Enrolment	1650	Pupil-teacher ratio	7:1
---------------------------	----	---------------	----	-----------	------	---------------------	-----

Average Class Sizes

Pre-Nursery

20 pupils with one qualified teacher supported by four dedicated teaching assistants and specialists in Pre-Nursery learning

Reception

22 pupils with one qualified teacher supported by one dedicated teaching assistant and specialists for Chinese, PE and music

Nursery

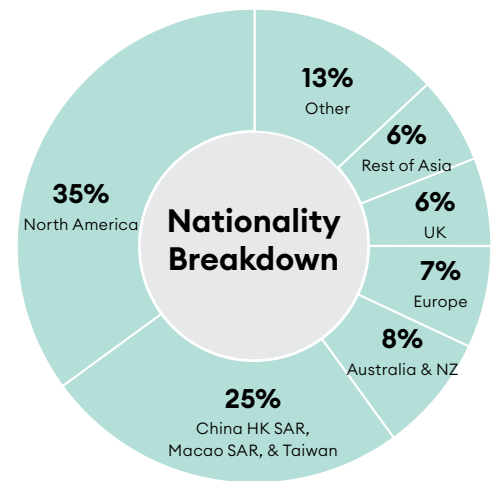
20 pupils with one qualified teacher supported by two dedicated teaching assistants and specialists for Chinese, PE and music

Years 1 to 6

22 pupils with one teacher, each supported by one dedicated teaching assistant and specialist teachers in various subjects

Years 7 and Above

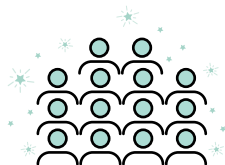
22 pupils per class, taught by specialist teachers for every subject (most classes in the sixth form are significantly smaller)



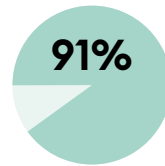
IGCSE Statistics



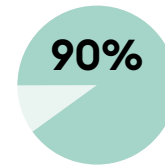
3 pupils (4%) achieved perfect scores (all A* or 9)



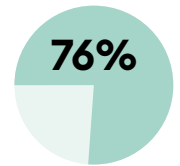
14 pupils (21%) achieved all A* - A (9 - 8)



91% of pupils achieved an A* or A grade in **Physics**

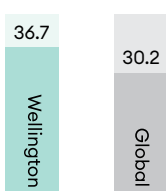


90% of pupils achieved an A* or A grade in **Mathematics**

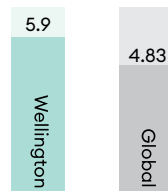


76% of pupils achieved an A* or A grade in **Chemistry**

IB Statistics



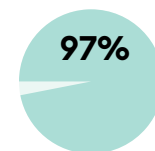
IB average score



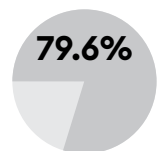
Average subject score



Best Wellington result 44 points



Wellington



Global

IBDP pass rate

Partnerships, Accreditations & Memberships



Partnered with Wellington College UK



Accredited by
International Baccalaureate Organisation (IBO)
Council of International Schools (CIS)



Member of

Council of British International Schools (COBIS)
Association of China and Mongolia International Schools (ACAMIS)
Federation of British International Schools in Asia (FOBISIA)

Vision

Wellington College International Shanghai is guided by a clear Vision and Purpose founded upon three strong pillars and expressed in our motto: **'Be you. Be more.'**

Our Vision and Purpose

We offer a **pioneering education to serve and help shape a better world**, combining the very best of British and international education to create a pupil-centric, multilingual, multicultural and inclusive learning experience.

We inspire our children to be the best version of themselves, to take pride in where they come from and to be the change they wish to see in the world.

Be you. Be more.

Inspiring our children to be **Learners, Connectors,** and **Changemakers.**

Our Three Pillars

We are Learners

with the passion, intrinsic motivation and critical thinking that enables us to solve real-world challenges.

We are Connectors

with the confidence, openness and empathy to bridge cultural chasms and bring our world closer together.

We are Change-makers

with the knowledge, networks and commitment to better serve our community and make a positive impact on the future.

Wellington Values

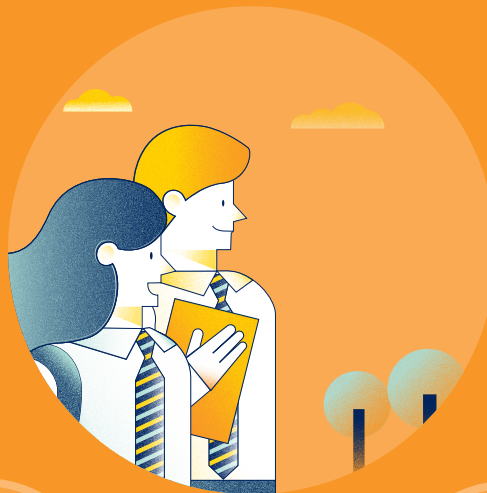
Our pupils, teachers and academic and non-academic teams embrace the Wellington values as our standard of interacting with one another and performing our duties. These are:



Courage



Integrity



Responsibility



Kindness



Respect

Guide to Year Groups

Wellington College will place pupils in the correct year group by age (unless there are exceptional circumstances). Pupils entering Wellington from schools following a different academic year, most likely January to November, will normally be required to repeat part of the given year group. If consideration is requested to waive this requirement, the Admissions Committee will base its decision on a wide range of factors. These include the admissions assessment results, the pupil's age, social maturity and general proficiency in English.



	Age as of September 1	Wellington College Year Groups	Curriculum (Wellington/ UK Key Stage)	United States/ Canada Equivalent	China/ Bilingual Equivalent
Early Years	2	Pre-Nursery	Curriculum follows standards set in the English Early Years Foundation Stage	Pre-K2	Early Years 1
	3	Nursery		Pre-K3	Early Years 2
	4	Reception		Pre-K4	Early Years 3
Lower Primary	5	Year 1	Curriculum based on English National Curriculum	Kindergarten	Early Years 4
	6	Year 2		Grade 1	Grade 1
	7	Year 3		Grade 2	Grade 2
Upper Primary	8	Year 4	Curriculum based on English National Curriculum	Grade 3	Grade 3
	9	Year 5		Grade 4	Grade 4
	10	Year 6		Grade 5	Grade 5
Secondary	11	Year 7	Curriculum based on English National Curriculum	Grade 6	Grade 6
	12	Year 8		Grade 7	Junior High Grade 1
	13	Year 9		Grade 8	Junior High Grade 2
	14	Year 10	IGCSE Programme (International General Certificate of Secondary Education)	Grade 9	Junior High Grade 3
	15	Year 11		Grade 10	High School Grade 1
	16	Year 12	IB Diploma Programme (Sixth Form)	Grade 11	High School Grade 2
	17	Year 13		Grade 12	High School Grade 3

Early Years

Our bespoke Early Years Centre is home to three year groups, Pre-Nursery, Nursery and Reception and is located a short walk away from the main campus.

In Early Years, the children follow a curriculum linked to the expectations of the English Early Years Foundation Stage Curriculum. It is a play-based approach, with regular observations forming the main part of assessment. Children spend much of their day exploring and learning through play, both indoors and outdoors. Children have teacher-directed tasks and daily phonics, maths, literacy and Chinese activities. We also place emphasis on how children learn, including their levels of wellbeing and involvement in play.

All children are taught for most of the day by a classroom teacher who is supported by a highly qualified teaching assistant and dedicated Early Years assistants for additional support. They provide pastoral as well. Specialist teachers lead Chinese, music, PE and swimming lessons (Reception only).

We aim to help every child reach their potential through developing a love of learning and an inquiring, creative and critical mind that looks well beyond what is taught in the classroom. With this firm foundation, we are assured that our children will then be able to transition to Pre-Prep on the main campus with confidence.



Early Years Pre-Nursery

Example
Timetable

	Monday	Tuesday	Wednesday	Thursday	Friday
8:10 – 8:30	Arrive/Registration				
8:30 – 8:40	Morning Circle				
8:40 – 10:30	Learning and exploration				
10:30 – 11:00	Physical Play	Dual Language Learning and Exploration	Learning and Exploration	Dual Language Learning and Exploration	Music
11:00 – 11:30	Lunch				
11:30 – 13:30	Nap				
13:30 – 14:00	Snack				
14:00 – 14:30	Outdoor Play				
14:30 – 15:10	Storytime and Goodbye Circle				
15:10	Pick up / home time				

Daily

Activities covering learning and exploration as well as outdoor play.

Weekly

Physical Play
Music
Dual Language Learning
Library

*All activities are conducted in English and supported with bilingual teaching assistants.

*Learning and exploration refers to child-initiated learning; Child self-select from a wide range of learning-focused activities

Early Years Nursery

Example
Timetable

	Monday	Tuesday	Wednesday	Thursday	Friday
8:10 – 8:30	Arrive/Registration				
8:30 – 8:40	Morning Circle				
8:40 – 10:15	Learning and Exploration				
10:15 – 11:00	Fun with Chinese				
11:00 – 13:00	Lunch/Nap				
13:00 – 13:45	Learning and Exploration	Library	Learning and Exploration	PE	Context-based learning
13:45 – 14:30	Music	PE	Context-based learning	Learning and Exploration	
14:30 – 15:10	Story time and Goodbye Circle				
15:10	Pick up / home time				

Daily

Activities covering learning and exploration as well as Fun with Chinese.

Weekly

PE
Music
Library

*Learning and exploration refers to child-initiated learning: Child self-select from a wide range of learning-focused activities

*Context-based learning refers to topics like: All About Me, Fantasy, Around the World, Transport, Animals, Let's Keep Fit

Early Years Reception

Example
Timetable

	Monday	Tuesday	Wednesday	Thursday	Friday
8:15 – 8:30	Arrive/Registration				
8:30 – 8:40	Morning Circle				
8:30 – 09:15	Phonics				
09:15 – 10:00	Fun with Chinese				
10:00 – 11:20	Learning and Exploration				
11:20 – 12:30	Outdoor Learning/Lunch				
12:30 – 13:15	Music	Library	PE	Context-based learning	PE
13:15 – 14:00	Numeracy				Numeracy
14:30 – 15:10	Story time and Goodbye Circle				
15:10	Pick up / home time				

Daily

Activities covering learning and exploration, phonics, numeracy, as well as Fun with Chinese.

Weekly

PE**
Music
Library

*Learning and exploration refers to child-initiated learning: Child self-select from a wide range of learning-focused activities

*Context-based learning refers to topics like: All About Me, Fantasy, Around the World, Transport, Animals, Let's Keep Fit

**PE will include swimming on rotation

Primary School

In Primary School we place great emphasis on the development of the whole child. High academic standards are coupled with an extensive and varied co-curricular activities (CCA) programme.

Our Primary School is structured to accommodate the age and stage of the children. We have developed a Primary Learner Profile that underpins our vision of developing children into exceptional young adults. Based on the IB Learner profile, it helps pupils cultivate learning behaviours, confidence and motivation. It consists of five main strands: self-management, thinking skills, research skills, communication skills and social skills.

Our curriculum is everything that happens in our school. We challenge our pupils academically in these critical formative years before young adulthood, but we also develop their character by encouraging every pupil to discover their passions and skills. This approach helps to create well-rounded individuals who are equipped for success.

Through our CCA programme, pupils develop their interests and skills outside of the classroom. These activities range from sports and music to drama and community service. This approach

helps to develop the whole child and encourages our pupils to become well-rounded individuals.

Years 1, 2 and 3 (ages 5 – 8) comprise Lower Primary. Children have most of their lessons with their class teacher in their own classroom with some specialists such as PE, Chinese, drama, music and art.

The children then advance to Upper Primary, years 4, 5 and 6 (ages 8 – 11). Children are still taught in classes by their class teacher, but they also benefit from an increasing number of specialist teachers in subjects like computing.

We recognise that not every child is a natural academic in the classroom, but everyone has qualities to be discovered, developed and nurtured. The Wellington approach looks beyond subjects. We encourage the patience, persistence and hard work that ultimately result in success. Whilst our pupils will grow in terms of knowledge and their ability to pass exams, they will also gain wisdom beyond subject knowledge.

Success may be measured in the short term by exam results, but the way our pupils go on to live their lives after graduation is the ultimate proof. We, therefore, aim to give our pupils the skills, knowledge and aspiration to truly achieve in life.



Primary Learner Profile

Primary School Curriculum

An exciting and inspiring curriculum that is truly preparatory for pupils' futures



Thinking Skills

Our pupils are thinkers. They demonstrate independence in learning and life skills. They learn to solve problems with critical and creative thinking. Our pupils are open-minded. They develop cultural capital relevant to their context in time and place. They are open to different cultures, perspectives and experiences.



SELF-MANAGEMENT SKILLS

Our pupils are reflective, self-reliant and creative in response to challenges. They are confident to reflect on learning through metacognitive and self-regulatory skills. Our pupils are balanced. They can recognise and regulate their own emotions and respond empathetically to others.



Social Skills

Our pupils are principled. They embody and promote the values of kindness, responsibility, respect, courage, and integrity. Our pupils are risk-takers. They approach uncertainty with courage. They explore new ideas and demonstrate resilience in every aspect of their lives.



Communication Skills

Our pupils are confident and articulate communicators. They develop ideas and explore concepts with fluency and ease. Our pupils are caring. They interact positively with members of our school community.



Research Skills

Our pupils are knowledgeable across a range of disciplines. They read, understand and write fluently, confidently and accurately across different forms and genres using high-level academic language. Our pupils are inquirers. They are curious, enthusiastic and independent learners who use research skills to plan, monitor and evaluate their learning.

Lower Primary Years 1&2

Example
Timetable

	Monday	Tuesday	Wednesday	Thursday	Friday
8:00 – 8:15	Arrive/Registration				
8:15 – 8:45	Pastoral provision				
8:45 – 9:45	Inquiry	Inquiry	Mathematics	Inquiry	Mathematics
9:45 – 10:45	English			Mathematics	Chinese
10:45 – 11:15	Break				
11:15 – 12:15	Chinese			Music	Creative Arts
12:15 – 13:15	Lunch				
13:15 – 14:15	Phonics and reading				Wellbeing/Library
14:15 – 15:15	PE	CCA (Every Tuesday)	Swimming	Mathematics	Pastoral/ Assembly
15:25	Bus Departure				

Weekly

Mathematics x 4
English x 3
Phonics and reading x 4
Chinese x 4
Inquiry x 3

PE x 1
Swimming x 1
Music x 1
Creative Arts x 1
Wellbeing/Library x 1

*Inquiry is a comprehensive, thematic and creative programme where the following subjects are covered within the topic theme: science, history, geography, art, ICT, international society, music and technology

Lower Primary Year 3

Example
Timetable

	Monday	Tuesday	Wednesday	Thursday	Friday
8:00 – 8:15	Arrive/Registration				
8:15 – 8:45	Pastoral provision				
8:45 – 9:45	Mathematics				Chinese
9:45 – 10:45	English				Mathematics
10:45 – 11:15	Break				
11:15 – 12:15	Chinese	Chinese/ Wellbeing	PE	Chinese	English
12:15 – 13:15	Lunch				
13:15 – 14:15	Inquiry	Computer Science/ Inquiry	Chinese	Reading	PE
14:15 – 15:15	Music	Creative Arts	Inquiry		
15:25	Bus Departure				End of School Day 15:15 Bus Departure 15:25
15:15 – 16:45	CCA (Pupils will participate in a maximum of two per week)				
16:55	After CCA Bus Departure				

Hours per fortnight

Mathematics x 10
English x 10
Chinese x 9
Inquiry* x 9

PE** x 4
Reading x 2
Music x 2
Creative Arts x 2
Computer Science x 1
Wellbeing x 1

*Inquiry is a comprehensive, thematic and creative programme where the following subjects are covered within the topic theme: science, history, geography, art, ICT, international society, music and technology

**PE will include swimming on rotation

Upper Primary Year 4&5

Example
Timetable

	Monday	Tuesday	Wednesday	Thursday	Friday
8:00 – 8:15	Arrive/Registration				
8:15 – 8:45	Pastoral provision				
8:45 – 9:45	English				Mathematics
9:45 – 10:45	Inquiry	PE	Chinese/Inquiry	Reading	English
10:45 – 11:15	Break				
11:15 – 12:15	Mathematics				Creative Arts
12:15 – 13:15	Lunch				
13:15 – 14:15	Music	Chinese	Inquiry	PE	Chinese
14:15 – 15:15	Chinese	Inquiry	Computer Science/ Wellbeing	Chinese	Inquiry
15:25	Bus Departure				End of School Day 15:15 Bus Departure 15:25
15:15 – 16:45	CCA (Pupils will participate in a minimum of two per week)				
16:55	After CCA Bus Departure				

Hours per fortnight

Mathematics x 10
English x 10
Chinese x 9
Inquiry* x 9

PE** x 4
Reading x 2
Music x 2
Creative Arts x 2
Computer Science x 1
Wellbeing x 1

*Inquiry is a comprehensive, thematic and creative programme where the following subjects are covered within the topic theme: science, history, geography, art, ICT, international society, music and technology

**PE will include swimming on rotation

Upper Primary Year 6

Example
Timetable

	Monday	Tuesday	Wednesday	Thursday	Friday
8:00 – 8:15	Arrive/Registration				
8:15 – 8:45	Pastoral provision				
8:45 – 9:45	Mathematics	Humanities	Mathematics	English	Design
9:45 – 10:45	Music	Chinese	English	Humanities	Mathematics
10:45 – 11:15	Break				
11:15 – 12:15	English	English	Chinese	Chinese	English
12:15 – 13:15	Drama	Science	Art	Computer Science	Chinese
13:15 – 14:15	Lunch				
14:15 – 15:15	PE	Mathematics	Wellbeing	PE	Humanities
15:15 – 16:45	CCA (Pupils will participate in a minimum of two per week)				End of School Day 15:15 Bus Departure 15:25
16:55	Bus Departure				

Hours per fortnight

(Subject to review)

English x 10

Mathematics x 8

Chinese x 8

Science x 3

Humanities x 6

Music x 2

Art x 2

Design x 2

Computer Science x 2

Drama x 2

*PE x 4

Wellbeing x 1

*PE will include swimming on rotation

Secondary School

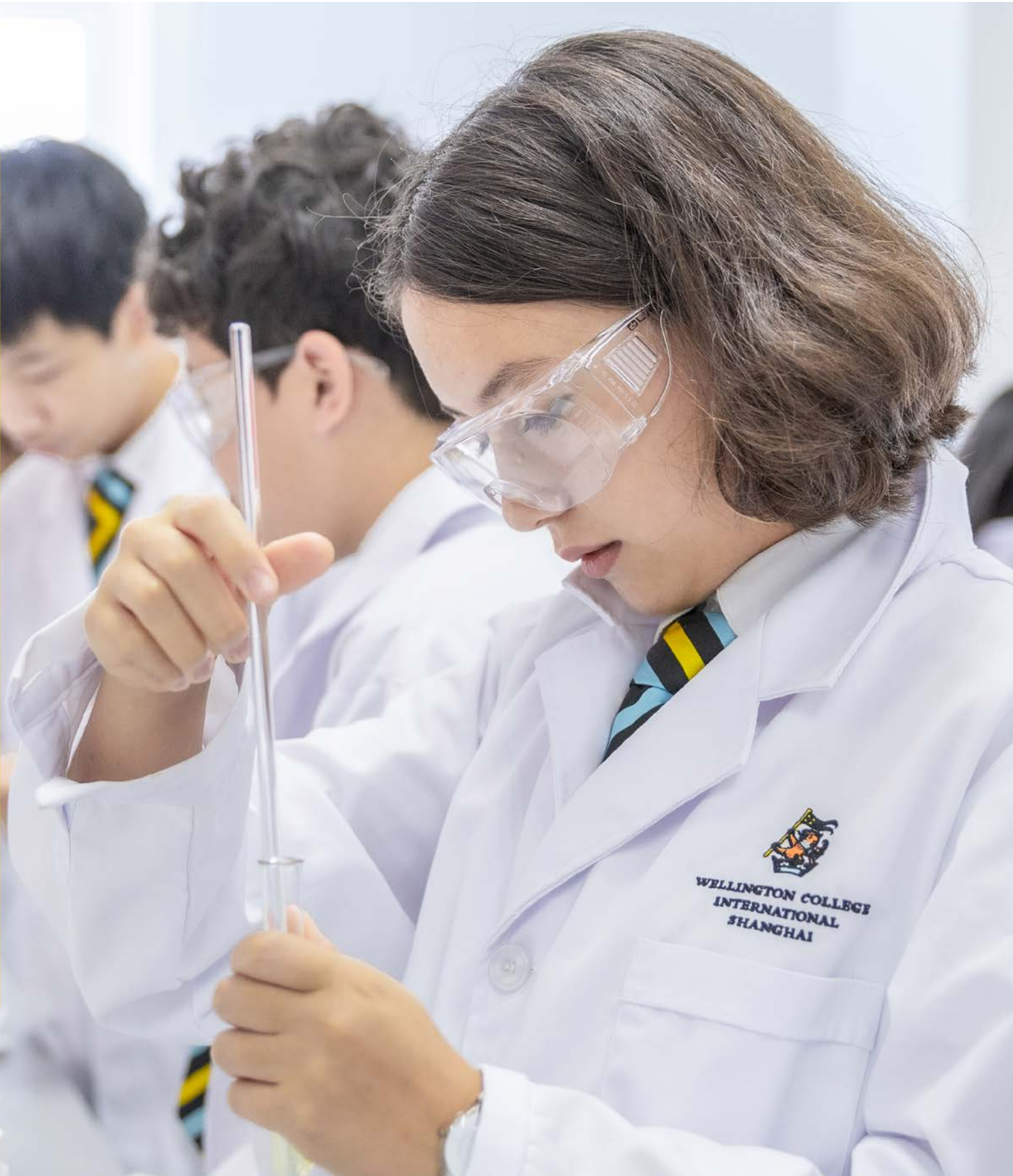
Our Secondary School is a place where young people between the ages of 11 and 18 can grow intellectually, creatively, physically and morally. We want Wellingtonians to graduate equipped with the best possible examination results and valuable life skills to draw on throughout their life. This includes a kind and compassionate outlook that values others for who they are, not what they have; a true generosity of the spirit; personal integrity; and an ability to remain resilient in the face of life's challenges. We expect the best of all our pupils. This means asking them to take ever greater personal responsibility for being organised and for being effective learners. We also want them to take more responsibility for their relationships with each other and, increasingly, with the world beyond school.

These aims are reflected in our challenging course material. Our teachers work closely with pupils to develop an increasingly analytical and critical relationship with knowledge across the curriculum. Purposeful debate, imaginative twists and rigorous investigation characterise our lessons. The curriculum is complemented by an extensive co-curricular activities (CCA) programme in which pupils can discover and explore their passions in music, sport, drama, dance, debate and so much more. A highly responsive and individually focused pastoral system underpins all we do in the Secondary School. Heads of year and tutors help each pupil to define their own meaningful goals and the steps needed to reach them. Working in a close partnership with parents, they offer the

guidance, care and belief that all young people need as they progress from adolescence to young adulthood.

Between the ages of 14 and 16, our pupils study a broad range of IGCSE courses that equip them with a high level of knowledge and understanding across the areas of languages, sciences, mathematics, humanities and the arts. This gives pupils a clear aim and a solid platform for more demanding study in the sixth form. Here, they take on the challenges of the International Baccalaureate Diploma Programme (IBDP). A wide-ranging and challenging programme of study, this involves six academic subjects together with compulsory elements including an Extended Essay, Creativity, Activity & Service (CAS) and the study of the Theory of Knowledge.

The IB Diploma commands a reputation among universities across the world as a mark of distinction. Potential university students with an IB Diploma have proved they not only have the academic standing needed to attend elite institutions but also the commitment, organisation and resilience that professions and employers demand. Our Higher Education and Careers Programme begins in the very first weeks of year 9 and is proven to help pupils access their first-choice university. Every year, we proudly send our graduates to top UK and US schools, such as Cambridge, Oxford, Imperial College London, UCL, Caltech, University of Chicago, University of Pennsylvania, Brown, University of California Berkeley and more.



Secondary Year 7

Example
Timetable

	Monday	Tuesday	Wednesday	Thursday	Friday
8:00 – 8:15	Arrive/Registration				
8:15 – 8:45	Pastoral provision				
8:45 – 9:45	Science	Music	Art	Drama	English
9:45 – 10:45	English	French/Spanish/ Chinese Studies	Chinese	Wellbeing	Chinese
10:45 – 11:15	Break				
11:15 – 12:15	PE	Computer Science	English	Chinese	Science
12:15 – 13:15	Chinese	Mathematics	Mathematics	Humanities	Humanities
13:15 – 14:15	Lunch				
14:15 – 15:15	Humanities	English	PE	Mathematics	Design
15:15 – 16:45	CCA (Pupils will participate in a minimum of two per week)				End of School Day 15:15 Bus Departure 15:25
16:55	Bus Departure				

Hours per fortnight
(Subject to review)

English x 7
Mathematics x 7
Chinese x 7
Science x 6

Humanities x 6
Music x 2
Art x 2
Design x 2
Computer Science x 2
Drama x 2

French/Spanish/ Chinese Studies x 3
*PE x 3
Wellbeing x 1

*PE will include swimming on rotation

Secondary Year 8

Example
Timetable

	Monday	Tuesday	Wednesday	Thursday	Friday
8:00 – 8:15	Arrive/Registration				
8:15 – 8:45	Pastoral provision				
8:45 – 9:45	Mathematics	Mathematics	Science	English	Wellbeing
9:45 – 10:45	Chinese	English	Mathematics	Drama	Mathematics
10:45 – 11:15	Break				
11:15 – 12:15	Art	French/Spanish/ Chinese Studies	Design	Mathematics	PE
12:15 – 13:15	Computer Science	Science	Geography	Chinese	English
13:15 – 14:15	Lunch				
14:15 – 15:15	Science	History	Chinese	Chinese	Music
15:15 – 16:45	CCA (Pupils will participate in a minimum of two per week)				End of School Day 15:15 Bus Departure 15:25
16:55	Bus Departure				

Hours per fortnight

(Subject to review)

English x 7
Mathematics x 7
Chinese x 7
Science x 6

History x 3
Geography x 3
Music x 2
Art x 2
Design x 2
Computer Science x 2

Drama x 2
French/Spanish/
Chinese Studies x 3
*PE x 2
Wellbeing x 1

*PE will include swimming on rotation

Secondary Year 9

Example
Timetable

	Monday	Tuesday	Wednesday	Thursday	Friday
8:00 – 8:15	Arrive/Registration				
8:15 – 8:45	Pastoral provision				
8:45 – 9:45	Chinese	Computer Science	Art	Mathematics	Mathematics
9:45 – 10:45	Physics	Drama	Chinese	Global Perspectives	English
10:45 – 11:15	Break				
11:15 – 12:15	Music	Geography	PE	Chinese	Biology
12:15 – 13:15	English	Mathematics/ French/Spanish/ Chinese Studies	French/Spanish/ Chinese Studies	History	Wellbeing/English
13:15 – 14:15	Lunch				
14:15 – 15:15	Chemistry	Design Technology	Mathematics	English	Chinese
15:15 – 16:45	CCA (Pupils will participate in a minimum of two per week)				End of School Day 15:15 Bus Departure 15:25
16:55	Bus Departure				

Hours per fortnight

(Subject to review)

English x 7
Mathematics x 7
Chinese x 7
Chemistry x 2
Biology x 2

Physics x 2
History x 2
Geography x 2
Music x 2
Art x 2
Design Technology x 2
Computer Science x 2

Drama x 2
French/ Spanish/ Chinese Studies x 4
*PE x 2
Wellbeing x 1
Global Perspectives x 2

Secondary Years 10&11

Example
Timetable

	Monday	Tuesday	Wednesday	Thursday	Friday
8:00 – 8:15	Arrive/Registration				
8:15 – 8:45	Pastoral provision				
8:45 – 9:45	English/ Mathematics	Global Perspectives	English	Chemistry	Option 1
9:45 – 10:45	Option 2	Chemistry	Option 3	Option 4	Option 5
10:45 – 11:15	Break				
11:15 – 12:15	Option 3	Option 4	Option 1	English/Global Perspectives	Mathematics
12:15 – 13:15	Option 5	English	PE	Mathematics	Wellbeing/ Chemistry
13:15 – 14:15	Lunch				
14:15 – 15:15	Option 1	Mathematics	Option 5	Option 2	Option 3
15:15 – 16:45	CCA (Pupils will participate in a minimum of two per week)				End of School Day 15:15 Bus Departure 15:25
16:55	Bus Departure				

Hours per fortnight

(Subject to review)

English x 7

Mathematics x 7

Chemistry x 5

PE x 2

Wellbeing x 1

Global Perspectives x 3

5 subject options x 25

Secondary / Sixth Form Years 12&13

Example
Timetable

	Monday	Tuesday	Wednesday	Thursday	Friday
8:00 – 8:15	Arrive/Registration				
8:15 – 8:45	Pastoral provision/Assembly/University Guidance				
8:45 – 9:45	English (HL)	Music (SL)	Economics (HL)	Mathematics (HL)	Music (SL)
9:45 – 10:45	Free period	English (HL)	Theory of Knowledge (TOK)	Free period	English (HL)
10:45 – 11:15	Break				
11:15 – 12:15	Economics (HL)	Free Period	Mathematics (HL)	English (HL)	Free Period
12:15 – 13:15	PE/ Theory of Knowledge (TOK)	Chinese (SL)	Free Period	Theory of Knowledge (TOK)	Free Period
13:15 – 14:15	Lunch				
14:15 – 15:15	Free Period	Economics (SL)	Music (SL)	Free Period	Wellbeing/PE
15:15 – 16:45	CCA (Pupils will participate in a maximum of four per week)				End of School Day 15:15 Bus Departure 15:25
16:55	Bus Departure				

Hours per fortnight

(Subject to review)

Higher level subjects (HL) x 9

Standard level subjects (SL) x 5

Theory of Knowledge (TOK) x 3

PE x 2

Wellbeing x 1

Free periods x 5





Higher Education and Career Guidance

Our Higher Education and Careers (HEC) programme is personalised, strategic and effective. As soon as pupils enter year 9, they meet regularly with one or more of our team of full-time HEC counsellors to discuss their intellectual interests, their extracurricular pursuits and their thoughts about university and professional pathways. These meetings, to which parents are always invited, are followed up with bespoke advice on how the pupil can take the next steps towards their post-secondary goals.

As our pupils progress from year 9 through year 13, they take part in timetabled sessions focused on specific aspects of the university search and application process, including how to identify universities of best fit, how to write an effective personal statement or essay, how to craft a winning activity list and much more. By

the time they enter year 13, all our pupils have a clear understanding of how to make the strongest possible application to the universities of their choice, and our HEC counsellors are always on hand to support them in completing those applications while managing the rigorous demands of the IB Programme.

We also provide our pupils with ample opportunities to enhance their understanding of future pathways through career talks with accomplished professionals; internship opportunities across a range of industries; individual university visits; and our annual Global University Fair, which features more than 100 universities from around the world. With all these opportunities, and the HEC lessons and counsellor support described above, it is no wonder that our graduates receive offers from top-ranked universities around the world.

Dual Language Pathway

We offer a comprehensive Dual Language programme from Pre-Nursery to year 8. It is designed to provide pupils with a unique and enriching educational experience that fosters bilingualism and cross-cultural competence.

The Dual Language programme is based on a balanced 60:40 immersion model, enabling pupils to receive instruction in both English and Chinese while following the Wellington curriculum. This approach ensures that pupils effectively develop language proficiency.

One of the primary benefits of the Dual Language programme is that it allows pupils to maintain their native language while developing a high level of proficiency in Chinese.

Our Dual Language classes follow a co-teaching model, with Chinese and English teachers collaborating closely. Beyond literacy, pupils use both languages in various subjects, including mathematics, Inquiry, PE, art and more.

Graduates of this programme have the opportunity to pursue a bilingual diploma within the International Baccalaureate (IB) programme, providing them with access to a world of global opportunities.



Chinese

English is the official language of the Wellington curriculum, but teaching Mandarin Chinese is an essential part of our mission to cultivate well-rounded, internationally-minded pupils.

Chinese is mandatory for all pupils from Early Years to year 9. At the end of year 9, most pupils continue their Chinese studies further with the IGCSE and IBDP. Our Chinese culture studies course is designed for pupils in years 7 through 9 with native or near-native proficiency. The course explores China's literature, arts, politics, economy, science, philosophy and geography throughout history while further improving pupils' language skills (especially reading and writing). Pupils also learn to reflect critically on both modern and traditional Chinese societies and develop strong cultural awareness. This lays a solid foundation for the study of IGCSE Chinese First Language and IB Chinese A Language and Literature.

With our daily co-curricular activities (CCA) programme, pupils deepen their understanding and appreciation of Chinese through a wide range of cultural and linguistic activities. We also organise an annual calendar of events around traditional Chinese celebrations, such as Chinese New Year, Dragon Boat Festival and Mid-Autumn Festival, working closely with our local Sanlin Community.





Chinese Language Learning Paths

To ensure our pupils get the most out of their coursework, we assess their abilities and place them in classes accordingly, from the level of total beginner to native speaker. Pupils are placed in classes according to their background in Chinese:

- **First-Language Learners** – We classify first-language learners as pupils who have grown up speaking Chinese as their first language. They can think in the language and use it for most communication purposes. These pupils will tend to focus their studies on reading, writing, literature and culture rather than speaking and listening.
- **Second-Language Learners** – Second-Language Learners are pupils from bilingual homes who generally only use Chinese in specific contexts. They may have limited skill sets (for example, speaking and listening but with little to no literacy). This category also includes pupils whose first language is not Chinese but have had significant exposure to the language through time spent in China or through intensive education in the target language.
- **Foreign-Language Learners** – Foreign-language learners are studying Chinese purely as an academic exercise. They encompass the widest range of prior knowledge, from none to near fluency. These pupils will focus on speaking, listening, reading and writing.



Enrichment

A well-rounded child is a successful one. Whether it is our sports and arts programmes, our commitment to cultural pursuits or simply the range of clubs and activities we offer daily, enrichment at Wellington comes in many forms. An education here challenges, inspires and motivates every Wellingtonian.

The Arts

The arts are central to Wellington life. Our dynamic arts programme stimulates our pupils' imaginations and inspires them to realise the full potential of their talents.

We aim to instil in every Wellingtonian a lifelong love of drama, dance, music, creative writing, art and design. Our annual calendar of activities and events offers opportunities for every pupil to perform and showcase their learning and talent.

Drama

The theatre is the home of drama at Wellington. With regular performances, the department demonstrates versatility and depth by staging major musicals and a variety of plays, as well as house events, drama competitions, talent shows and pupil-led productions.

Dance

Dance gives Wellington pupils experience in a variety of disciplines. Our dance classes include a wide range of styles and genres, such as ballet, jazz dance, contemporary and physical theatre.

Music

Whether it is classical, rock, jazz or pop, Wellington

provides an enormously diverse and impressive music programme. We have three orchestras, a wind band, a full jazz big band and many choirs. Our pupils take part in concerts and recitals throughout the academic year.

Visual Art

Visual art is a core part of our curriculum, and pupils get to explore a wide range of media from textiles and sculpture to pottery and fine arts. The quality of the pupils' work is evident throughout the College. In corridor displays and exhibitions, the creativity in each piece is exceptional.

Other Arts

Creative writing, debating and filmmaking are deeply embedded in Wellington life. During our annual Arts Festival, pupils participate in a variety of workshops from graffiti to journalism, storytelling, clowning, opera singing, manga and beyond.

Sport

At Wellington, sport is an integral part of every pupil's education, development and wellbeing. By encouraging physical activity and promoting involvement in sport, our pupils develop a wide range of aptitudes and life skills.

We encourage pupils of all skill levels to experience the joy of physical endeavour. Our coaching teams create an environment where our children learn with a judicious mix of challenge, competitiveness and open communication. We offer a wide variety of individual and team sports, such as swimming, football, basketball, netball, rugby, cricket and much more.



Physical Education

PE is mandatory for all pupils up to year 9. Our curriculum covers a range of physical activities. Instruction emphasises both personal development and skill acquisition, with an understanding that pupils must move to learn and learn to move.

Co-Curricular Activities (CCA)

Co-curricular activities (CCAs) provide an exciting opportunity for Wellington pupils to explore new activities, cultivate new interests and develop a variety of skills and values. Within the Primary School, we organise CCAs for pupils across the range of year groups, allowing them to connect and make friends with children of different ages. Annual tuition fees include participation in CCAs Monday to Thursday.

The CCA programme for years 1 and 2 is built into the school day. Year 3 pupils can choose a maximum of two CCAs per week. From year 4 onwards, a minimum of two CCAs should be chosen each week.

Our offerings encompass a diverse array of activities spanning sports, the arts and clubs and societies. Pupils are encouraged to select physical as well as creative pursuits.

We also provide a variety of affiliated CCAs which enable pupils to engage in off-campus activities, such as horse riding, golf and skiing.

Pupils change activities at the start of every term and where there is high demand, pupils select their top four choices via SchoolsBuddy. CCAs are automatically assigned, taking into consideration their preferences.

Sample CCA & Enrichment selection

Years 1-6	Years 7-13
CCA	CCA
Arts and crafts (drawing) Ballet Basketball Cub Scouts Chess Cooking Cricket Cheerleading Children's Kidsfit Comic Book Creation Football Gardening Guitar Orchestra Hip Hop Dance Learn to Swim Learn to Ride a Bike Maths Competitions Photography Public Speaking Running Club Spanish Culture Swimming Table Tennis Touch Rugby Yoga	AI Racing (Team) Art Open studio Bamboo Structures Biology Olympiad Centre Stage – performing arts training Chinese Debating Contact Rugby Debating Society DT Open Workshop Economics Society Frisbee Global Sustainability Club Hip Hop Dance Jazz and Ballet Law Society Maths Competition* MUN Open workshop – DT Orchestra Poetry Society Productions – Musicals & Theatre Psychology Society STEM Electronics (Team) Trampolining
Affiliated CCA Off-site and CCA time	Affiliated CCA Off-site and CCA time
Fencing Horse Riding Skiing Kayaking Jiu Jitsu Rock Climbing Sailing Ice Skating Golf Archery	Fencing Horse Riding Skiing Kayaking Jiu Jitsu Rock Climbing Sailing Ice Skating Golf Archery
Wellington Extra Available after school and Weekends	Wellington Extra Available after school and Weekends
Basketball Chess Football Rugby Self-defence Theatre School: Acting/Musical Theatre Public Speaking Tennis Swimming (Learn to Swim)	Basketball Chess Football Kung Fu Rugby Self-defence Theatre School: Acting/Musical Theatre Public Speaking Volleyball



Pastoral Care and Houses

Pastoral Care

Ensuring our pupils are safe, supported and engaged in school life is at the very core of all we do at Wellington. Our pastoral care system provides the structure, space and time for all pupils to make friends, explore and express themselves with confidence. All teachers at Wellington have a role to play in the social and emotional development of the children in our care. They are guided by a dedicated pastoral team whose sole aim is to ensure all our pupils feel valued and have direct access to any support they need.

We recognise that each child is unique, with individual needs and a unique range of aptitudes. We aim to harness these individual qualities and to help unearth new ones to help each appreciate the value of happiness and fulfilment. Guided by the Wellington values of kindness, courage, integrity, responsibility and respect, we promote personal and emotional development, academic ambition, confidence, self-expression and empathy.

For our pupils in Early Years to year 5, teachers provide one-to-one daily pastoral support. From year 6 onwards, the children receive focused pastoral support from their tutor. Heads of year oversee and drive this provision College-wide, and they in turn are led by a core team of pastoral leaders including assistant heads and counselling, mental health and safeguarding leads.

Each school day will begin with a pastoral session. During this time, one-to-one and group discussions take place as well as opportunities for quiet self-study and reflections on the week's wellbeing focus. This time is also used for year group, house and school assemblies and provides the chance for our pupils to feel part of their wider community and to celebrate group and individual successes.

Houses

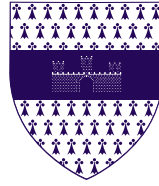
Wellington College International Shanghai's eight houses are selected from the 17 houses of our partner school in England. All pupils immediately become a member of a house upon joining the College. This will remain their house for the duration of their time here. Our house system is designed to engage and inspire our pupils, to give them a chance to shine individually and as part of a team and to celebrate the successes of their peers. Various artistic, sporting and academic activities and competitions run throughout the year. These provide every pupil with the opportunity to try something new, venture out of their comfort and showcase their talents. The culmination of all these activities and competitions ultimately leads to one house being crowned the year's house champions at the end of the academic year.



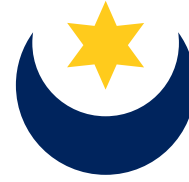
COMBERMERE



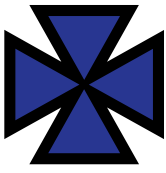
HARDINGE



HILL



HOPETOUN



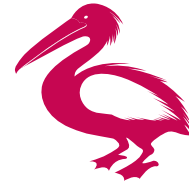
LYNEDOCH



ORANGE



STANLEY



WELLESLEY

Wellbeing Programme

From years 1 to 13, our pupils explore what ‘living well’ means to them through a bespoke curriculum developed in partnership with the Institute of Positive Education. It is founded upon the PERMAH model of wellbeing to help pupils flourish: positive emotions, engagement, relationships, meaning, accomplishment and health. The curriculum addresses the specific needs of Wellington pupils. It feeds off and informs work done by class teachers, form tutors and the College’s wider pastoral systems.

Some wellbeing lessons have a strong practical element: encouraging teamwork, problem solving and creativity but all end with a reflection upon why this is important for our wellbeing. Some lessons are more theory-based, exploring ideas such as Maslow’s Motivation Model, Levine’s Truth Default Theory or the RULER approach to emotional intelligence. All lessons ask pupils to reflect on and impart the knowledge they have gained into practical steps for their own daily lives. Importantly, we do not suggest there is a single formula for all that can be applied to solve life’s mysteries, nor do we seek to remove the challenges we all experience. Rather, we hope that through developing awareness and understanding, and by challenging preconceptions and asking difficult questions, all children at Wellington are equipped to tackle their journey ahead.



Parents as Partners

Parent Engagement Programme

Wellington's Parent Engagement Programme includes parents information sessions, parent-teacher conferences and 'Parents as Partners' workshops. The sessions explore in greater depth a wealth of topics, sharing insights on the many important issues that our parents and teachers encounter in pupils' learning, growth and development. They encourage and explore ways to bridge the gap between home and school learning, making every moment an opportunity for holistic development and strengthening the partnership between all those in our community.

Friends of Wellington

The Friends of Wellington (FOW) represents our parents, teachers and other members of the school. It meets regularly and contributes to making life at the College vibrant for the whole community by coming together to share, learn and celebrate.

It organises events such as our International Food Festival, Chinese New Year celebrations, the Summer Festival and various cultural trips for parents. The FOW also collaborates with the College on several charity initiatives throughout the year.





Fellowships and Scholarships

The Wellington Academic, Sports and Arts Fellowship Programme

The College offers academic, arts, and sports fellowship programmes for pupils in year 9 and above to enrich and encourage success in these disciplines.

Fellows play a significant role in College life and must show a high degree of ability in their chosen field whilst also demonstrating leadership and mentorship to all pupils. They will enjoy an enhanced curriculum in their chosen field, consisting of subject mentorship, higher education support, specialist tuition and/or coaching, as well as other benefits.

How to Apply

Entry onto the Wellington Fellowship list is highly competitive. A rigorous selection process is undertaken at the start of each academic year.

If you are a current pupil and are interested in applying to be a fellow, please contact the following staff members for more details.

Arts (music, musical theatre, drama, dance, visual art) – Director of Arts (Michael Larsen-Disney)

Sports – Director of Sports (Daniel Tuitt)

Academics – Academic Fellows Coordinator (Rory Vaughan)

The relevant department will conduct a preliminary review of the application. Selected candidates will be invited to an assessment day, audition or trial. Successful candidates will be awarded with a fellowship tie, and badge and invited to our fellowship awards evening with their parents.

The Arts Department also runs the Aspirant Programme for younger pupils who strive to become fellows.

The Wellington Scholarship Award

Wellington's Scholarship Award is open to pupils entering year 11 and above. It recognises pupils who excel in academics, sports, or the arts. Applicants must demonstrate exceptional academic, sporting or performing arts potential, achievements and a strong commitment to their studies. They should also possess outstanding personal qualities, leadership skills and a commitment to community service.

Pupils who secure a scholarship award will be expected to fully engage with every aspect of school life and the Wellington community and will be invited to join the Wellington Fellowship programmes.

For pupils entering year 11, awards of up to 50% of annual tuition fees will be available for successful applicants. For pupils entering the IB diploma in the sixth form, up to 100% of annual tuition fees may be awarded to successful applicants.

How to Apply

Wellington Scholarships are highly competitive and subject to a rigorous application process. This will include personal statements, grade transcripts, subject-specific processes and panel interviews with the senior management team panel. Following interviews, the panel will make recommendations to the College Senior Leadership Team on the awarding of scholarships. The scholarship awards will be determined based on the strength of the applicant pool and available funding. The selected candidates will be notified of their scholarship offer in writing. Scholarships will be reviewed annually.

For more information on the application process, please contact our Admissions Team.







Application Guidelines

Timing

Applications for entry in August 2024 begin on 9 October 2023. There is no application deadline, but, as spaces are very limited in many year groups, we recommend you apply early to avoid disappointment. Applications to join Wellington during the current school year are received year-round on a rolling basis with spaces subject to availability.

English Language

English is the primary language of instruction at Wellington, and pupils are expected to have age-appropriate working knowledge and conversational use of English to ensure that they can access the curriculum. It is important that pupils offered a place can succeed academically, holistically and socially at Wellington. Therefore, all applicants will be assessed on their English proficiency.

Siblings and Waiting Lists

Siblings of current pupils and those with a previous Wellington association will take precedence. If the application is successful but there are no places, the applicant will be placed on the year group's waiting list and contacted once a place becomes available. The waiting lists will not roll over each year.

Application Costs

Wellington only charges the application fees as set out in our official fee schedule. We do not charge or accept any additional application or admissions fees. You should not pay or offer any sums of money (in cash or in kind) or give or offer gifts to any individual as part of the application process. Wellington only accepts applications directly from a family and not via any agent or similar educational establishment. Any agent or individual claiming that they have a preferential admissions relationship with Wellington should be reported to the Master's office by email to Carmen.foo@wellingtoncollege.cn.

Special Educational Needs (SEN)

We carefully determine whether the College resources, reasonably adjusted where appropriate, would be able to meet the pupil's educational requirements. In general terms, pupils can be offered places if they can participate successfully in a regular classroom with a limited amount of support. Parents must provide all recent educational psychologist's reports/ individual education plans/ medical reports for consideration by the head of the SEN Department. All known learning support requirements must be declared in full at the time of application. Failure to do so may jeopardise the child's place within Wellington College.

Bursaries

The College offers a limited number of bursaries to families applying to year 6 and above. Bursaries are awarded on a discretionary basis following rigorous and objective means testing. Parents will be required to provide proof of their income, assets, expenditure and liabilities. The level of support varies according to parental need. Before the offer of a bursary is confirmed, an interview with the Bursar may be required. All bursary awards are confidential and are subject to annual review of parental means and may vary depending on changing parental circumstances.

Terms and Conditions

The College expects all its parents to be fully supportive of the school's ethos and values and, therefore, all offers of a place are subject to agreement by parents to the terms and conditions, copies of which are available from the admissions office. The terms and conditions will be sent with your child's offer letter and must be accepted in order to formally secure your child's place.

Transferring Schools

Parents are advised to keep any current school informed of any intended move to Wellington College International Shanghai.

Application Checklist

All the documents in this checklist must be submitted to register your child. Applications will not be processed until all documents and the application fee have been received. Families must meet the criteria in one of the six categories set out in the checklist as determined by the Shanghai Municipal Education Commission (SHMEC). Please choose the appropriate category and submit all relevant documentation in support of your application.

A - Working parent is a foreign national with an Alien Employment Permit

B - Working parent is a PRC national working in Shanghai. Child was born overseas (B1) or the child was born in Hong Kong SAR, China; Macau SAR, China; or Taiwan, Province of China (B2)

C - Working parent holds a passport from Hong Kong SAR, China; Macau SAR, China; or Taiwan, Province of China

D - SHMEC waiver letter holders – Parents and child are PRC nationals with foreign permanent residence permits. The child has over two years of experience studying in the country where they have a residence permit

E - Working parent is a PRC national, married to a non-working, non-PRC national, residing in Shanghai legally and their child is a PRC national

F - Parent is a PRC national and has a foreign permanent residence permit. Child is a foreign national and holds a valid residence permit issued in Shanghai



How to Apply

Wellington College International Shanghai will accept applications for entry in August 2024 from 9 October 2023. There is no application deadline but as spaces are very limited in many year groups, we recommend you apply early to avoid disappointment. Applications to join Wellington during the current school year are received all year round, on a rolling basis with spaces subject to availability.

Visit the College

This is optional, but highly recommended.

Complete and Submit an Online Application Form via Open Apply

Submit the online application, upload all available supporting documents as outlined in the application checklist and pay the non-refundable RMB 3,000 application fee.

Admissions Assessment

For August 2024 enrolment, the Admissions Team will contact you from November 2023. Arrangements will then be made for assessments, which will take place between November 2023 and March 2024 (or remotely if currently living outside of Shanghai). For entry before August 2024, the Admissions Team will contact you to schedule an early assessment.

Admissions Committee Review Application and Assessments

Decisions are communicated on a rolling basis. Please understand that the process may take up to three weeks during the peak admissions season.

Successful Applications

Places are offered by letter. To secure a place, parents are required to accept the College's terms and conditions and pay the RMB 18,000 resource fee within five days.

Waiting List

If no places are available, we will send a waiting list letter. Parents will be contacted once a place becomes available.

Unsuccessful Applications

Parents will be informed by letter. The application will be closed. You may apply again after 12 months.



Checklist

Wellington College International Shanghai documents	(Please tick)					
	A	B	C	D	E	F
Completed and signed application form						
RMB 3,000 non-refundable application fee						
Official School Reports for the past two years in English (translated if required)						
Supporting documents for any special learning needs (if applicable)						

SHMEC Government-mandated documents	(Please tick)					
	A	B	C	D	E	F
Passport copy for pupil and both parents/legal guardians						
Child's birth certificate (notarised and translated for Type B)						
Residence permit/visa issued in Shanghai for all non-PRC pupils and parents/legal guardians		(B1)				
Evidence of relationship between legal guardians and student (child's birth certificate, proof of legal custody, certificate of family relationship or hukouben)						
Mainland Travel Permit (回乡证) and Permanent ID card (永久性居民身份证) for Hong Kong/Macau SAR residents, or Mainland Travel Permit (台胞证) for Taiwan, Province of China residents		(B2)				
Shanghai work permit: Foreign Experts Certificate (外国专家证) or Alien Employment Permit (外国人就业证), for at least one parent						
Employment certification letter and business license of the company based in Shanghai*						
Proof of residence in Shanghai: Either Hukouben (上海户口本) or rental agreement or certificate of real estate ownership, for at least one parent						
Waiver letter from the Shanghai Municipal Education Commission						
Marriage certificate (if PRC national is married to a foreign national)						
Copy of valid foreign permanent residence						

Notes

- If parents are of different nationalities, they can choose which application route to follow. Each family must complete all the requirements in one column.
- To begin the application process, all government documentation is required for families already living in Shanghai.
- If a family is living overseas they must produce the residency permit and proof of residence in Shanghai within 30 days of their child starting at the College.
- The College requires all pupils who are foreign passport holders to have a valid long-term visa to stay in China.
- Please note that the College follows the eligibility criteria set by SHMEC which may be subject to change.

* An employment certification letter is required for at least one parent. It must include: employee's name, date of birth, position, period of employment, registered company name, address and telephone number. The letter must be on company letterhead, signed by a department head and stamped with company chop.

Assessment

Wellington College is a selective school, but it does not select based on academic criteria alone. We admit pupils with a wide range of skills and abilities. The characteristics that are considered particularly important in the selection and decision-making process include:

- Academic ability, enthusiasm for arts, music, sports and service
- A willingness to work hard with a positive attitude towards learning
- An international outlook
- A desire to grow into a true Wellingtonian and develop in a range of areas by taking full advantage of the opportunities on offer at Wellington and a commitment to making a positive contribution to the Wellington community
- An aspiration to live by the Wellington values of kindness, courage, respect, integrity and responsibility

Assessment Process

Assessments

We understand that some children might find our admissions assessments a little daunting. We will do all that we can to ensure that the tests and interviews are age-appropriate, relaxed and as comfortable as possible. The details of the assessment process by year group are outlined further in this guide.

Selection

The decision to offer a place to a pupil will be taken by the Admissions Committee, comprising of the Master, Head or Deputy of the relevant section, the Director of Admissions and, if required, a representative of the EAL/SEN department. Decisions will normally be made within one week of the admissions assessments but may take up to three weeks in peak admissions season.

Early Years Assessment Process

The child, accompanied by their parent(s) will join us for a half an hour session during which time, the teacher will assess the child on how they play and interact with parents and interviewer. Children applying for a place in Reception will also be informally assessed on their basic literacy, communication and language skills, their ability to follow instructions, some basic numeracy and their ability to express themselves through drawing.

Meanwhile, parents will meet the interviewer individually to discuss their child's developmental milestones and whether their child is ready to join Wellington.

Pre-Nursery

- Toilet trained or preparing to be so
- Able to wash hands independently
- Can dress and undress with help
- Awareness of hygiene, including blowing own nose
- Can use a spoon and fork to eat independently
- Can use a cup and straw for drinking

Nursery

- Toilet trained
- Able to wash hands independently
- Can dress and undress with help and can put on their coat independently
- Awareness of hygiene, including blowing own nose
- Ability to use a spoon and fork and begin to use a knife independently
- Can use a cup and straw (children in Nursery should not be fed a bottle or use a dummy)

- Children must be accustomed to walking independently, including up and down stairs
- Can adapt to new surroundings and new people
- Can hold a pen and draw simple shapes
- Can express themselves in the present and occasionally in the past tense in their native language

Reception

- Toilet trained
- Able to wash hands independently
- Can dress and undress independently
- Awareness of hygiene, including blowing own nose
- Can use spoon, fork and knife independently
- Can recognise their own name (this helps when identifying their belongings – bags, coats, water bottles)
- Can climb, jump and walk up and down stairs independently
- Can draw with increasing detail
- Can express themselves using present, past and future tense in their native language

Primary School Assessment Process

Years 1 and 2

Your child will attend an hour-long group session accompanied by a teacher. They will mix with the other children and participate in typical class activities. The teacher will assess their ability to interact with their peers, to listen, to demonstrate independent skills and respond positively to instructions. Also, during the session, the class teacher will

spend some one-on-one time with each child to assess their reading, writing, phonics and speaking skills.

A member of the Admissions Team or Admissions Committee will also meet individually with parents to discuss their child's developmental milestones and to discuss whether their child is ready to join Wellington.

Years 3 – 6

The assessment comprises:

- a reading comprehension test in English
- a mathematics test
- a creative writing task
- a one-on-one session with a member of the Admissions Committee.

Secondary School Assessment Process

Years 7 – 10

The three-and-a-half-hour assessment comprises:

- a computer-based cognitive ability test involving various abilities such as verbal and non-verbal reasoning, spatial perception and quantitative reasoning
- an English comprehension reading test
- a creative writing task
- a one-on-one session with a member of the Admissions Committee.

Year 11

Applicants for enrolment in year 11 will be considered on a case-by-case basis.

Year 12

The three-and-a-half-hour assessment comprises:

- a computer-based cognitive ability test involving various abilities such as verbal and non-verbal reasoning, spatial perception and quantitative reasoning
- an English comprehension and creative writing test
- an interview with the Assistant Head of Senior School or the Head of Sixth Form.

The applicant will need to provide predicted IGCSE grades from their current school and copies of exam certificates will need to be provided upon receiving results.

Overseas Applicants' Assessment Process

Arrangements can be made for the entrance assessments to be carried out at the child's current school (or local testing centre). Interviews may also be conducted via online video conference.





Safeguarding and Child Protection

We place the safety and wellbeing of our community at the heart of everything that we do. This includes robust child protection and safeguarding policies and procedures. All members of staff understand the central importance of this commitment and undergo annual training in safeguarding young people. Also, they are required to read and sign the College's Safeguarding Policy and Staff Code of Conduct annually. The College adheres to the recommendations of the International Task Force on Child Protection (ITFCP) for its recruitment processes. Applicants to the College staff are required to undergo rigorous background checks before they are appointed.

Facilities

The campus offers the very best educational facilities, incorporating everything required for academic and extra-curricular excellence in 21st-century schooling.

Our science laboratories, art studios and design technology suites are purpose-built to encourage enjoyment in both practical and theoretical work. They are also entirely suited to fostering that extra level of creativity and ambition that our budding scientists, artists and designers strive for and ultimately achieve.

At the very heart of the school – both physically and academically – is our library. This multi-media centre provides our pupils with a wealth of resources for enrichment and independent inquiry. More importantly, it is a place where they can cultivate a lifelong love of reading and discovery.

The Performing Arts Centre caters to our musicians, dancers and thespians. It features dedicated practice rooms, a dance studio, our Black Box Theatre and, for major concerts and productions, our 500-seat Wellington College Theatre.

Our sports facilities are likewise second to none, with a sports hall, three football pitches, a 400-metre all-weather synthetic running track, tennis and basketball courts and two swimming pools, including a 25-metre, six-lane competition pool. Our air-filtered and temperature-controlled sports dome is equipped for tennis, football, badminton, basketball, handball, volleyball and more. These facilities also support our wide-ranging CCA programme, both after school and at weekends.





Wellington College International Shanghai

No. 1500 Yao Long Road (near the Oriental Sports Centre), Pudong Shanghai 200126

上海惠灵顿外籍人员子女学校

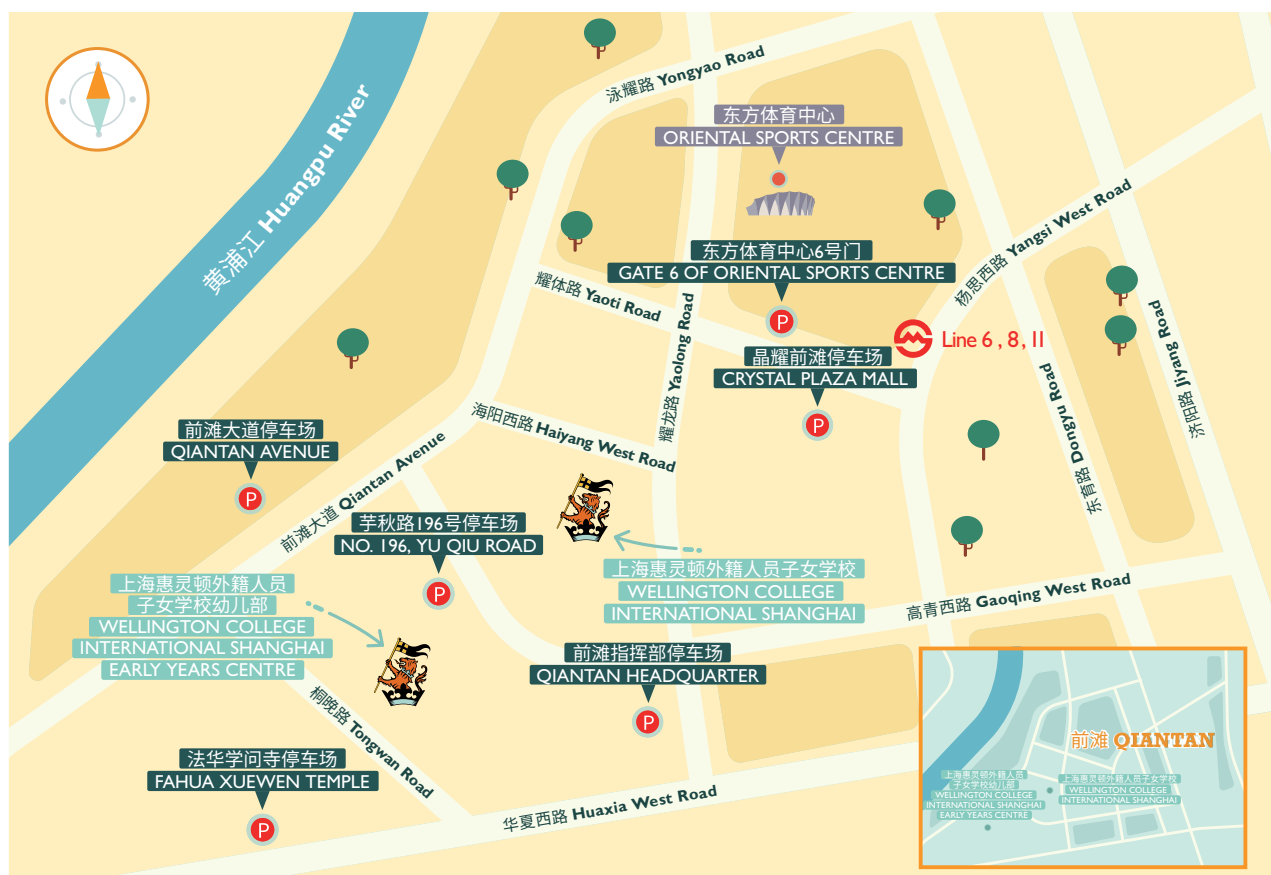
上海市浦东新区耀龙路1500号(靠东方体育中心) 邮编: 200126

Wellington College International Shanghai Early Years Centre

No. 195 Tongwan Road, Pudong Shanghai 200124

上海惠灵顿外籍人员子女学校幼儿部

上海市浦东新区桐晚路195号



Important Contacts

Admissions

admissions.shanghai@wellingtoncollege.cn | +86 21 5185 3885 | +86 21 5185 3864

Finance



For any finance-related queries, please contact finance.shanghai@wellingtoncollege.cn

Services

For any bus, catering or uniform-related queries, please contact services.shanghai@wellingtoncollege.cn

General enquiries

Please call 021 5185 3866 | Principal's office ext. 3881 | Secondary School office ext. 3873 | Primary School office ext. 3856
Early Years Centre 021 3175 6687 | Finance office ext. 3880 | Services office ext. 3861



**Pioneering education
to serve and help shape
a better world.**